



# Gifford Park's Pride

*Gifford Park Neighborhood: A Great Place to Live, Work, Learn and Play*

November 2004

A Publication of the Gifford Park Neighborhood Association

## 2004 Fall Cleanup Highlights

We had fine fall weather and lots of fine neighbors who volunteered and participated in our annual GPNA Fall Cleanup held Saturday, October 23, in Gifford Park. The cleanup itself filled two trash compactors (provided by Dale's Trash Service). The other events included the pumpkin patch (125 pumpkins given away – Earl May Garden Center gave us a great deal), pumpkin painting supervised by Jan Franks, Brittney Rubek, the Slayden family (Betty, Tiffaney, Kayleen, & Jacob), Police Officers Anna Doyle and Karen McArdle and a police cruiser were on site to educate children about public safety. Rodney Hay provided us with great barbecue beef and pork & beans, Loren Johnson with J'N'J Grocery provided hot dogs and polish sausages, Lilly Estes and Jack Sutton with California Bar provided pop and ice, we recycled a lot of metal, appliances, & 22 tires, and received over \$450 in memberships and donations. Roger Freeman, Jackie Foster, Clarinda Karpov and Andrew Saavedra supervised a couple groups of children to help pick up litter in the park and business district. Everyone who volunteered at the cleanup "earned" their free pumpkin and food. Thanks to Bob Hutton and Scout

*continued on page 4*



*One of the favorite activities of fall cleanup is pumpkin painting. The children love picking out their pumpkins and painting them with the traditional jack-o-lantern faces or something more "avant-garde".*

**Next Meeting**  
**Thursday, November 4**  
**7:00 P.M.**

**Guest Speaker:**  
**Steve Rothenberg**

**Topic: Via Christe (Duchesne)**  
**Assisted Living Facility**

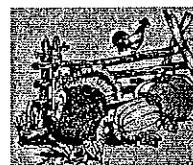
**Creighton University**  
**Medical Center**  
**Morrison Seminar Room**

**Executive Board Meeting**  
**Thursday, November 18**  
**7:00 P.M.**

**Yates Alternative School**  
**32nd & Davenport St.**

## GPNA Tennis Program Recognized By National Tennis Association

The Nebraska Tennis Association (NTA) selected the GPNA Tennis Program Finale as the "Outstanding Event of the Year" for 2004. This year's tennis finale featured a pizza party along with special recognition for the participants who had perfect attendance and who demonstrated good sportsmanship. A big thanks to everyone who contributed to the program and to the NTA for this award.



*Happy*  
*Thanksgiving !*  
from the Gifford Park  
Neighborhood Association

**GPNA OFFICERS****PRESIDENT**

Ron Frey 344-0757

**VICE PRESIDENT**

Cynthia Shuck 556-2090

**RECORDING SECRETARY**

Kate O'Brien 496-8419

**TREASURER**

Vicki Frey 344-0757

**NEIGHBORHOOD SERVICES****ADVERTISING**

Dar Sweazy 345-0125

**COMMUNITY GARDEN**

Chris Foster 342-6006

**COMPLIANCE**

Leo Wilwerding 345-1433

**HISTORIAN**

Eva Swanson 345-1707

**KELLOM SCHOOL LIAISON**

Jean Peck 344-0722

**MEMBERSHIP**

Chris Foster 342-6006

**NEWSLETTER**

Sue Wilwerding 342-2795

**NEWSLETTER DISTRIBUTION**

Chris Foster 342-6006

**NEWSLETTER MAILING**

Mike Bacom 933-7506

**PARK**

Roger Freeman 557-2914

**PARKING VIOLATIONS**

Leo Wilwerding 345-1433

**PUBLIC RELATIONS**

Cynthia Shuck 556-2090

**TOOL LENDING**

Chris Foster 342-6006

**WATCH GROUP**

Terry Wilwerding 342-2795

**WEEDS & LITTER**

Jim Wilwerding 551-1344

**WELCOMING**

Vicki Frey 344-0757

**From The President . . .**

Each life has its seasons. Just think of where you are right now. What is important to you? It would be interesting to compare that with your outlook a few years before to see how your perspective may have changed over time.

We all go through changes like that. Before we moved into Gifford Park, I was very disengaged with the community. That has changed, as we became part of a community with very specific needs. In the process I have grown in my understanding and appreciation for the effort and planning it takes to have a vibrant neighborhood.

A few years ago I had a young child who was interested in how much candy he got at the Easter Egg Hunt, or what costume he would wear for Halloween, or whether he hit the ball well at the Tennis Program. Now we are going through the transition to adulthood.

There is a quote that says, "When I was a child, I used to speak as a child, think as a child, reason as a child; when I became a man, I did away with childish things." In some respects, that happens with teens suddenly. Pokemon, Saturday cartoons and Disney transitioned overnight to Playstation 2 Vice City, Converse All-Stars (Chuck Taylors) and Jenko jeans, Saturday Night Live and Arnold Schwarzenegger.

But, underneath the surface, the angst of transition is a long process. Growing up is really hard and many of us still struggle with responsibility. We still want the security of home and being taken care of and letting others take responsibility for us. We spend the rest of our lives doing away with childish things.

We're approaching the end of another season in Gifford Park. As we were putting in park benches and doing the fall cleanup, I thought about the park and our neighborhood and its seasons of life. Many changes have occurred over time; some better, some worse.

Some of the things we do to improve the neighborhood are with the hope that it will have an immediately positive effect. Yet we have to keep in mind that "growing up" is a long term process—a marathon, not a sprint. Sometimes we get impatient at the pace, and other times we tire of the effort. Some will have a negative impression that things are getting worse, others have a positive impression that things are getting better.

I am impressed that our Spring and Fall cleanups, rain or shine, are still a central community event. One wonders how so much stuff is tossed each season. But it is a gathering point where I get to talk to people I don't usually see and meet new people. I continually am encouraged by people who are excited about being part of this historic neighborhood, and who want to see it thrive in the future.

So I think about the seasons of my life, and how my interests and outlook have changed. You might be motivated by some things, but not others. Your motivation might be different than others and may change over time. That is natural. Architectural restoration, home renovation, and local economic development may not hit your interest button, but public safety or something else relevant to our neighborhood may. That is where I would like to hear from you and how you could uniquely contribute to our future.

by Ron Frey

*Editor's note: If you have something that would be of interest to our neighborhood, we encourage you to submit an article for our monthly newsletter. Editorials must be approved by the GPNA Executive Board. Articles can be left at the GPNA Office; please include your name and phone number. Contact Sue Wilwerding (342-2795) or Chris Foster (342-6006) for information regarding the newsletter.*

## GPNA Tennis Program Is Recipient of Joe Blum Memorial

The last several years **Paul & Lindsey Johaneck** have volunteered as instructors for our annual Gifford Park Neighborhood Association Summer Tennis Program. Sadly, Lindsey's father, **Joe Blum**, recently passed away. Joe always believed in community grassroots efforts and his family graciously asked that memorial donations be sent to the GPNA Tennis Program in remembrance of Joe. To date, donations have totaled nearly \$2,000. These donations will go toward developing and furthering tennis at the grassroots level in our neighborhood and hopefully encourage children, as well as adults, to enjoy the sport as much as Joe did.

Joe Blum was born and raised in Joliet, Illinois. As a teenager he was active in sports; basketball and baseball being his favorites. In college he was a Junior College All-American in basketball at Joliet Junior College and transferred to Oberlin College in Ohio where he met his wife-to-be, **Margaret Jameson**, and enlisted in the Navy. After his marriage and tour of active duty, Joe and Maggie moved to Omaha.

He became General Agent for National Life of Vermont and he and Maggie had three children. At that point Joe took up the sport of tennis. Because his office was downtown, he spent his noon hour at Dewey Park. He entered tournaments and was ranked in the Missouri Valley section. He was president of the Omaha Tennis Association in 1972 and also won the Sportsmanship Award. Joe eventually built the Omaha Racquet Club, one of the first tennis clubs in Omaha. Joe passed on his love for the sport to his three children, and today his grandchildren play as well.

The GPNA thanks the Blum family, their friends, and the Omaha tennis community for their great support of tennis in Gifford Park.

*by Chris Foster*

## SNAP! Productions Presents Kiss Of The Spider Woman

SNAP! Productions presents **Kiss of the Spider Woman**, a Tony-award winning musical that explores the complex relationship between two men caged together in a Latin American prison. The presentation will run from **November 12** through **December 5** at **3225 California St.** Curtain times are 8 p.m. Thursday, Friday, & Saturday and 6 p.m. on Sundays. Tickets are \$15, general admission; \$12, students, senior citizens, and TAG members. Call 341-2757 or go online to [www.snapproductions.com](http://www.snapproductions.com) for reservations.

## Community Garden Update

Next time you pass by the community garden at 35<sup>th</sup> & Cass Street, take an extra few minutes to walk around the garden. You'll notice a couple nice changes by GPNA volunteers. **Justin Brown** replaced the six Peace Pole languages with professional-looking signs that you can actually read – the old signs were looking pretty bad. Justin also did the sign that has the names of organizations that have supported the garden project – the sign is mounted on the tool shed. **Diane Kaye** has continued to expand the rose gardens on the southeast corner – nearly all the roses were planted this year and are doing very well. Most of the perennials in the far back were provided by Diane (many transplanted from her own yard!) Earlier this summer, **Mike Caban** provided a donation and inspiration toward constructing the pergola that now has some of Diane's climbing roses growing and weaving up the sides – it sits over a bench on the east side of the garden. And of course there was the very successful Youth Garden Program organized by **Kate O'Brien** – people are still talking about it! Many thanks to everyone involved in the community garden this year; your efforts are very much appreciated!

**CALIFORNIA BAR**  
**510 North 33rd St.**  
**Come join us!**  
**Nascar Racing Sundays**  
**Happy Hour Weekdays**  
**449-9138**

**Charles R. Kilgore Jr.**  
**Attorney At Law**

**4913 Underwood Avenue**  
**558-5000**

**Personal Injury Law**  
**Worker's Compensation**

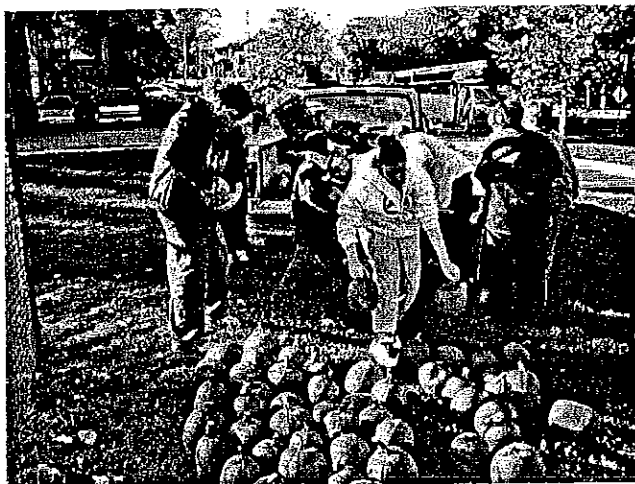
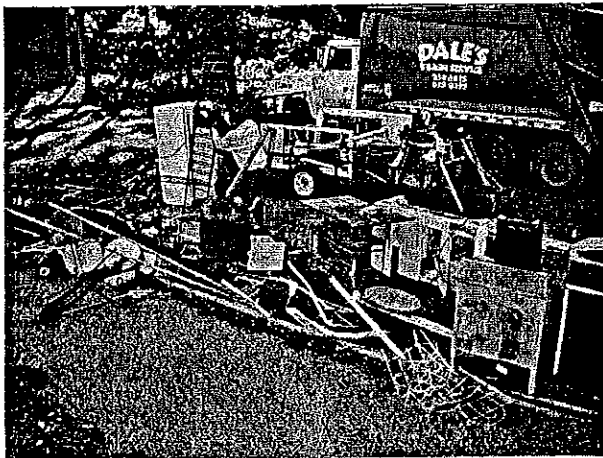
**Injury**  
**Auto Accidents**  
**Insurance Claims**

**Fall Cleanup . . . continued from page 1**

Master Jim Detwiler, their boy scout troop had a great setup in the park for anyone interested in learning about scouting. They demonstrated wood splitting, camping and tent setup, lashing and other outdoor activities. Bob even shared one of his many talents – cooking apple cobbler – it was delicious!

The rest of our dedicated volunteers included: Bob & Virginia Hutton, Lloyd Canfield, Rich Exline, Terry & Sue Wilwerding, Steve Wilwerding, Ron & Vicki Frey, Justin Brown, Jim Wilwerding, Billy Dooly, Kirk & Jean Peck, Cynthia Shuck, Mike Bacome, Mike Wilwerding, Chris & Sallie Foster, Leo Wilwerding, Richard & Bonnie Kaster, Scott & Sandi Knudsen, Brian Wesson, Eva Swanson, William Slattery, Eric McGee, William Eubanks, Mark Glassman, Mic & Jane Whelan, Creighton University Medical Center, and the City Parks Department. And a special thanks again to the Omaha Community Foundation for providing most of the funds for this event, and making the variety of interesting, healthy activities possible. Thank you all!

*by Chris Foster*



**Gifford Park's Strays: You Can Help!**

Gifford Park sees more than its share of homeless cats—but fortunately, there are also people who care about our furry neighbors and want to help. The problem is preventable. ALWAYS spay or neuter your animal companion. If you want to adopt a cat or dog, adopt from the Humane Society or other shelter, from rescue groups like Feline Friendz (778-1111) or The Coalition for Animal Protection (490-0111), from a local rescuer, or rescue one yourself, if there's a cat or dog trying to adopt you! If you can no longer care for your animal companion, NEVER abandon her, but find her a good home. (Always screen prospective guardians, as unscrupulous "B" dealers or "bunchers" acquire animals from "Free to Good Home" ads to sell to laboratories.) Never give an animal as a gift, as they may end up neglected or abandoned.

For full information as to how you can help, and also resources for low-cost spay/neuter, adoption, locating a lost pet, finding your companion a new home, and full contact info for neighborhood, local, and national resources, please contact Michelle Rubek (714-3107) or Clarinda Karpov (553-3736). We have assembled a free information packet for you, and then we can go from there! Also let us know if you're interested in forming a Gifford Park Friends of Animals network. We're also contemplating an informal gathering in the park to share information on critter care with representatives of local rescue and animal welfare groups. Sound like fun? Watch this space!

*by Clarinda Karpov*

### City Regulations For Vehicles

Information taken from OPD's Nuisance Unit Brochure

Vehicles must be currently licensed.

Vehicles cannot have expired plates or dealer plates, improperly displayed plates, or expired in-transit stickers.

Vehicles with homemade in-transit stickers cannot be parked on public streets.

Vehicles must be driven at least one mile and reparked a minimum of three car lengths from its original parking place every 48 hours.

Vehicles must be legally parked.

Vehicles cannot be left unattended on the interstate for more than 12 hours.

Non-emergency vehicle repairs cannot be made on the street.

Vehicles over 4 tons, or any vehicles with or without a trailer, which exceed 21 feet in length, or 7 feet in width, cannot be parked on any street or alley for longer than one hour.

The GPNA Is Now On The Net!  
Visit [www.Giffordpark.org](http://www.Giffordpark.org)

## California Tacos & More

Homemade Mexican Food

342-0212

33rd & California Street

Dine In or Carry Out

### Hours:

Monday - Saturday: 11a.m. - 9 p.m.

Closed Sunday

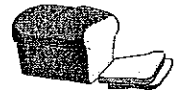


# J'N'J

## GROCERY STORE

*Fresh Meats -- Fresh Produce*

*Friendly Service*



### 3301 California Street -- 422-1058

## WE DELIVER!



7:00 AM - 10:00 PM Monday thru Thursday

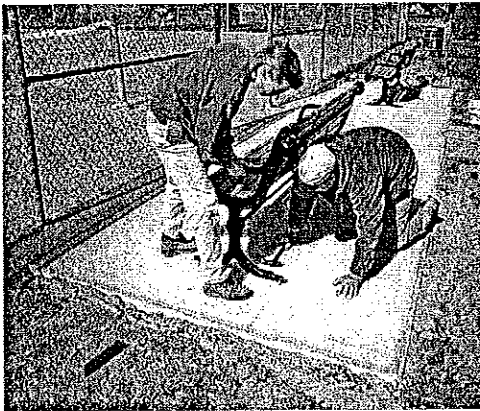
7:00 AM - 11:00 PM Friday thru Saturday

8:00 AM - 10:00 PM Sunday

## Check Out The New Park Benches!

In October, GPNA volunteers completed the installation of six new park benches in Gifford Park that were received as part of grants from the **Omaha Community Foundation** and the **Mayor's Grant Program**. On Saturday, October 9, we dug and formed the three designated areas for the concrete pads for the benches. The concrete pads were poured and finished on October 13 by **Kiewit Construction Company** (thanks to **Bob Edick, Kirk Kobiela, Gabriel Villagomez, Chico Rangel, Kenny Melies and Jim Taylor**). Then on Saturday, October 16, we completed the park bench assembly and installation. Many thanks to GPNA volunteers **Cynthia Shuck, Jim Wilwerding, Ron Frey, Mike Wilwerding, Rob Parolek, Justin Brown, Leo Wilwerding, Bob Hutton, Chris Foster and Clarinda Karpov**. We also thank **Pat Slaven**, our City of Omaha Park Planner, for her assistance. Check out the benches, they are very nice!

by *Chris Foster*



## Holiday Banquet Set For December 2

It's hard to believe with all this magnificent fall weather we've been experiencing that the Holiday Season is just around the corner, but plans are already being made for the **16th Annual GPNA Holiday Banquet**. The event is scheduled for **Thursday, December 2nd, at 7 p.m.** **Creighton University Medical Center** has once again graciously offered to host the dinner, which takes the place of the December general meeting. Since this is a **members only** function, now is the time to join or renew your membership - send in the application at the bottom of this page with your dues today or bring it to the November general meeting. You won't want to miss this wonderful (and delicious) event - and rumor has it that **Rodney Hay**, the neighborhood's resident meat specialist, will probably be preparing some of the turkey! Don't miss this great way to kick off the holiday season!



**GIFFORD PARK NEIGHBORHOOD ASSOCIATION**  
**P.O. Box 31462 Omaha, NE 68131-0462**  
**MEMBERSHIP APPLICATION**  
*(Please print clearly)*



Membership year: \_\_\_\_\_ *(Membership year runs from June 1 through May 31)*

Type of membership: Single (\$5) \_\_\_\_\_ Family (\$8) \_\_\_\_\_ Business (\$25) \_\_\_\_\_

Name of business \_\_\_\_\_

Name \_\_\_\_\_ (Last) \_\_\_\_\_ (First)

Spouse \_\_\_\_\_ (Last) \_\_\_\_\_ (First)

Address \_\_\_\_\_ (Street) \_\_\_\_\_ (City) \_\_\_\_\_ (State) \_\_\_\_\_ (Zip)

Telephone Number: \_\_\_\_\_ (Home) \_\_\_\_\_ (Work)

E-mail Address: \_\_\_\_\_

Can we contact you for help on any of the following items? (please circle areas of interest).

- |                        |                   |                  |                         |
|------------------------|-------------------|------------------|-------------------------|
| Cleanup/Beautification | Tennis Program    | Block Captain    | Tool Lending            |
| Membership             | Youth Activities  | History          | Newsletter              |
| Neighborhood Walks     | Park              | Merchants        | Newsletter Distribution |
| Social Activities      | Tree Planting     | Watch Group      | Meeting Program         |
| Landlord/Tenant Issues | Calling Committee | Public Relations | School Liaison          |



### TOOL LENDING HOTLINE

Mike 933-7506  
 Chris 342-6006

Mowers - \$5  
 Rent for most tools - \$3



For City Services,  
 Information, or Complaints  
 Call: Mayor's Action Office  
**444-5555**