

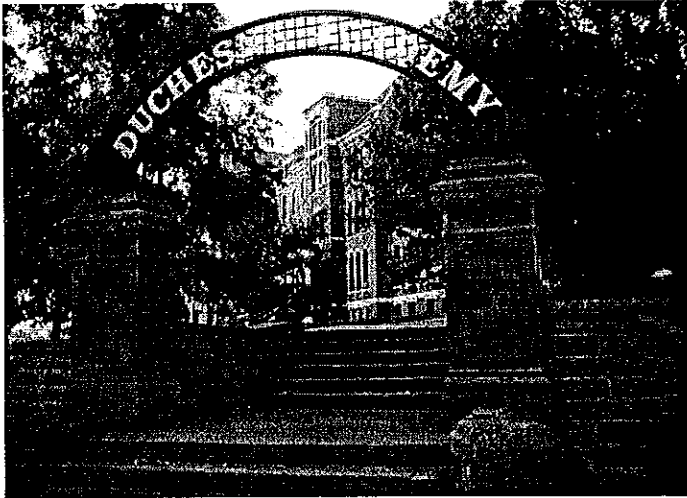


Gifford Park's Pride

Gifford Park Neighborhood: A Great Place to Live, Work, Learn and Play

November 1996

A Publication of the Gifford Park Neighborhood Association



Looking through the wrought-iron arch at Duchesne's entrance.

Historically Speaking...

Duchesne Academy

From the Nebraska Historical Marker on the Academy grounds:

In October 1881, Mother Margaret Dunne and three religious of the Sacred Heart opened a boarding school for girls at a temporary location on Ninth and Howard in Omaha. On September 1, 1882, Bishop James O' Connor sold Park Place, a 12-acre site "west of town," to the sisters for one dollar. Building construction commenced in February, and in November the Academy of the Sacred Heart opened to seventeen boarders. On Easter Sunday, March 23, 1913, a devastating tornado demolished the north wing of the school. Reconstruction took a full year and changed the front entrance to the present circle drive.

The school was approved for college courses in 1916, and in 1920 the Academy became Duchesne College and Convent of the Sacred Heart. Both college and grade school closed in the 1960's having educated thousands of students, pre-school through college. Today Duchesne Academy of the Sacred Heart

continued on page 5



Next Meeting

**Thursday, November 7
7:00 P.M.**

**Guest Speaker:
To Be Announced**

**St. Joseph's Hospital
Dining Rooms A, B, & C**

FREE PARKING

8th Annual Holiday Banquet

Thursday, December 12...

See Details on Page 2

*****Note: This Year's Holiday Banquet is on the second Thursday in December.**

Fall Cleanup Report

The Gifford Park Cleanup Crew had to dig a little deeper to find trash for this year's annual fall cleanup, held Saturday, October 26 in Gifford Park. We had fewer calls this year for trash pickups and early on it appeared we might need just a single twenty CY dumpster. But never underestimate the ability of our volunteers to rise to the occasion of a neighborhood cleanup. By 11 am the first dumpster was full, by 12:30 pm the second dumpster was full, and the third was hauled away around 3 pm. This was the first year we have filled three dumpsters during our fall cleanup.

Despite winds gusting to near 50 mph, temperatures were in the 70's with lots of sunshine. We did the usual trash hauling for neighbors, cleaning the park, recycling, dumpster packing and membership drive. Some of the other highlights included: Eighty pumpkins were given away to neighborhood kids; Tom Rose, in charge of traffic control, made sure we ran a safe cleanup

continued on page 4

GPNA OFFICERS

PRESIDENT

Leo Wilwerding 345-1433

VICE PRESIDENT

Mike Bacome 344-3233

RECORDING SECRETARY

Barbara Remmen 341-8331

TREASURER

Jean Peck 344-0722

COMMITTEE CHAIRS

C.D.C.

Chuck Kilgore 341-2757

CLEAN-UP

Chris Foster 342-6006

COMPLIANCE

Leo Wilwerding 345-1433

COURTESY

Candy Bacome 344-3233

HISTORIAN

Eva Swanson 345-1707

LITTER - BUSINESS DISTRICT

Rich Exline 341-4388

MEMBERSHIP

Cynde Yates 342-6543

NEWSLETTER

Chris Foster 342-6006

NEWSLETTER DISTRIBUTION

Mike Bacome 344-3233

OFFICE

Marlene Wilwerding 345-1433

PARK

Mike Bacome 344-3233

PARKING VIOLATIONS

Terry Wilwerding 342-2795

PUBLIC RELATIONS

Anne & Linda Chapman 348-0464

TOOL LENDING

Ed Hendershot 341-0475

WATCH GROUP

Ron Yates 558-6027

WEEDS & LITTER

Jim Wilwerding 551-1344

*Make Your Reservations Now for
the Gifford Park Neighbourhood Association's*

**8th Annual
Holiday Banquet**

*to be held
at 7 p.m. on December 12th
at St. Joseph's Hospital
601 N. 30th Street
in the special dining room
south of the cafeteria.*

*St. Joseph's Hospital graciously
demonstrates its support of the
GPNA by hosting this annual event
for members. Food catering by
Marriott Host Services.*

*There is no cost - you just need
to be a GPNA member.*

*Call 345-1433 for reservations
by December 6th.*

SAINT JOSEPH HOSPITAL
AT CREIGHTON UNIVERSITY MEDICAL CENTER



**TOOL
LENDING
HOTLINE**



*Tom 341-3955
Ed 341-0475
Ron 558-6027*

**Mowers - \$5
Rent for most tools - \$3**



City Solutions...Where to Call

Problem.....	Call	Agency/Department
Abandoned/junked cars	444-5782	Vehicle Impound Lot
Animal bites	444-7578	Humane Society
Barking dogs, sick, injured or stray animals	444-7800	Humane Society
City Services complaints or information	444-5555	Mayor's Action Office
Crime or Vandalism	444-5600	Police Division
Empty buildings, vacant houses, occupied dilapidated houses	444-5371	Planning
Garbage not picked up	444-5238	Solid Waste
Gas leaks, waterline breaks, fire hydrants	554-7777	M.U.D.
Holes, debris or litter in the street	444-4919	Street Maintenance
Improperly licensed vehicles	444-5888	Police Department or 444-5555 Mayor's Action Office
Rats, raw garbage, etc.	444-7481	Douglas County Health
Street construction, problems/complaints	444-5220	Construction Engineer
Tenant/landlord discrimination issues	444-5055	Human Relations
Tenant/landlord legal issues	444-1060	Legal Aid Society
Trailers/Cars parked on front lawn	444-5350	Permits & Inspections
Zoning enforcement	444-5364	Permits & Inspections

What's Happening in the Neighborhood...

Everyone is encouraged to attend the November general meeting at **St. Joseph's Hospital, Thursday, November 7, at 7 pm.** As always there will be plenty of refreshments. Topics to be discussed are the upcoming Holiday Banquet, Northeast Precinct meeting, fall cleanup recap, Urban Community Improvement Program report and standing committee reports.

GPNA President **Leo Wilwerding** will attend a meeting of all neighborhood association presidents in the Northeast Precinct on **November 18.** The purpose of the meeting is to introduce **O.P.D. Captain Don Thorsen** to neighborhood leaders and share concerns. Everyone is encouraged to share ideas and questions that you would like Leo to bring to the November 18 meeting.

Winter tennis lessons will be offered in November and December at **Hanscom Park Indoor Tennis Center.** Dates and times are **Tuesdays and Thursdays, 4:30 to 5:30 pm,** and also **Saturdays 2:30 to 3:30 pm.** The cost is \$35 (scholarships are available). Call **Dante (551-9670)** or **Chris (342-6006)** for information.

With the Christmas holiday season fast approaching, it is a good idea to hang those Christmas lights and decorations now before the cold, ice and snow make the task more difficult. Our neighborhood has always done a superb job of decorating our beautiful homes and getting everyone into the holiday spirit.

Note to parents of children attending **Lewis & Clark Jr. High School** (now and in the future): Do you live a few blocks outside of the area where yellow school buses operate? I need a count of kids who are expected to wait for a city bus, in the dark, every morning. I would like to bring this to the school board and try to get our children a safe ride to school. Contact **Maureen Calabro (M&M Investments), 345-7238.** Please leave a name, number, address and the number and ages of your kids.

**For City Services Information
or Complaints,
Call:**

Mayor's Action Office

444-5555

Charles R. Kilgore Jr. Attorney At Law

4913 Underwood Avenue

558-5000

**Personal Injury Law
Worker's Compensation
Injury
Auto Accidents
Insurance Claims**

California Bar & Pkg. 510 No. 33rd St.

**Serving the Gifford Park
Community since 1937
Wayne and Peggy Hill,
Proprietors**



Editor's note: If you have something that would be of interest to our neighborhood, we encourage you to submit an article for our monthly newsletter. Editorials must be approved by the GPNA Executive Board. Articles can be left at the GPNA Office; please include your name and phone number. Contact Chris Foster at 342-6006 for information regarding the newsletter.

Fall Cleanup Report *continued from page 1*

as well as fun; Ron Yates removed long-standing junk from the old Circle Theater; Ben Sweazy used his large capacity truck to haul many loads on a trip - this saved us a ton of time; Leo Wilwerding showed off his hot doggin' skills on a propane grill provided by Kirk Peck - best tastin' hot dogs ever!; Linda Chapman, Shelly DeBoer and Candy Bacome staffed the membership table - great job!; Billy Dooly took care of our "heavy metal"; Lloyd Canfield was one of the earliest to arrive and the last to depart - Lloyd, you always give 150%; Damon Runyon of Ken Labs Trash provided great service as always; Pat & Brian Glass from Baker Rents donated the 15'x15' canopy which sheltered us from the wind; Mike and Ben Caban helped monitor the dumpsters; And very special thanks to Jim Wilwerding who assisted in dumpster packing from start to finish. Here's a recap:

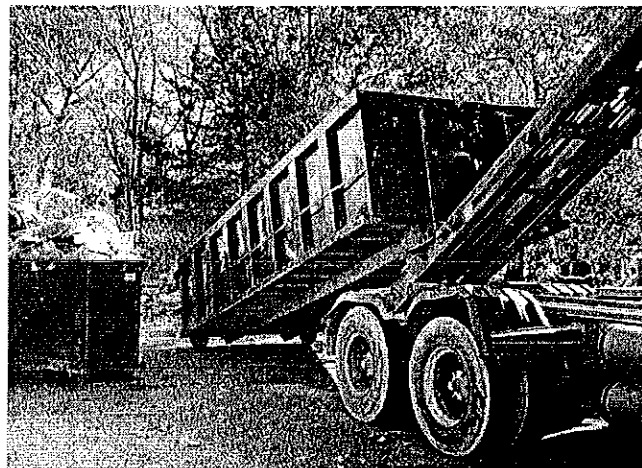
- filled 3 dumpsters
- recycled tires, metal, appliances (\$72 in salvage)
- sold garage sale items (\$13)
- sold 10 memberships (\$71)
- collected donations (\$69)



'Master Chef' Leo Wilwerding keeps the hot dogs cooking as these kids wait in line. We typically roast about 200 hot dogs during our fall and spring cleanups.

The GPNA also thanks the following businesses and institutions for their help - Please support them because they support our neighborhood!

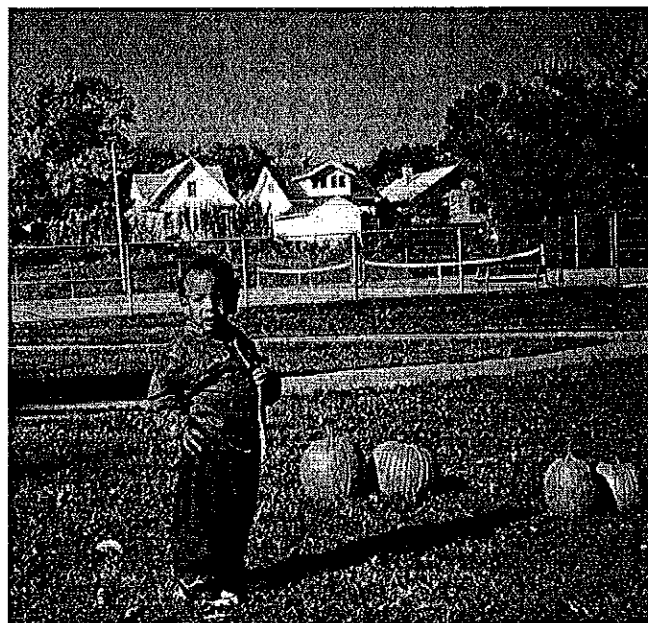
- Baker Rents - Pat & Brian Glass
- Ken Labs Trash - Damon Runyon
- St. Joseph's Hospital - Rodney Hay
- J'N'J Grocery - Loren Johnson
- California Bar - Wayne & Peg Hill
- Douglas Cnty. House Arrest - Lt. Stangel, Officer Cook
- City of Omaha - Jerry Flood, Ed Aldmeyer
- Western Auto - Greg Wisgerhof
- 7-Eleven
- Billy Dooly



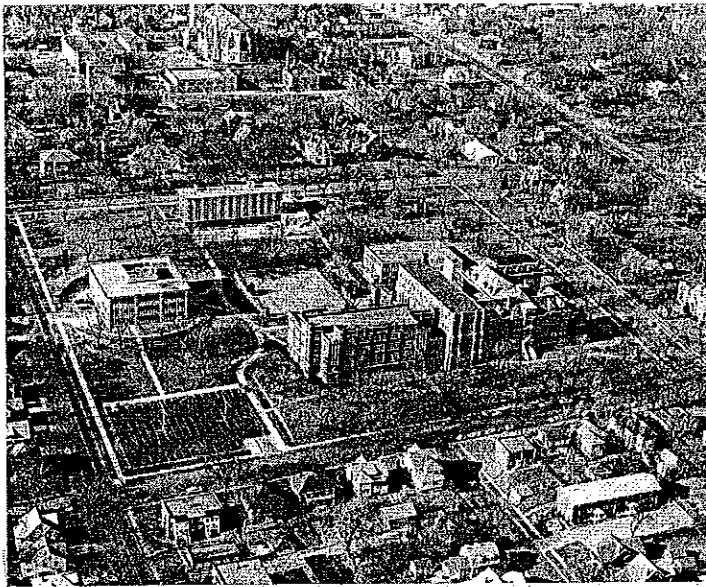
Here the full container is being replaced with an empty one. Ken Labs Trash provided us with three containers.

The following neighborhood volunteers turned in another great effort:

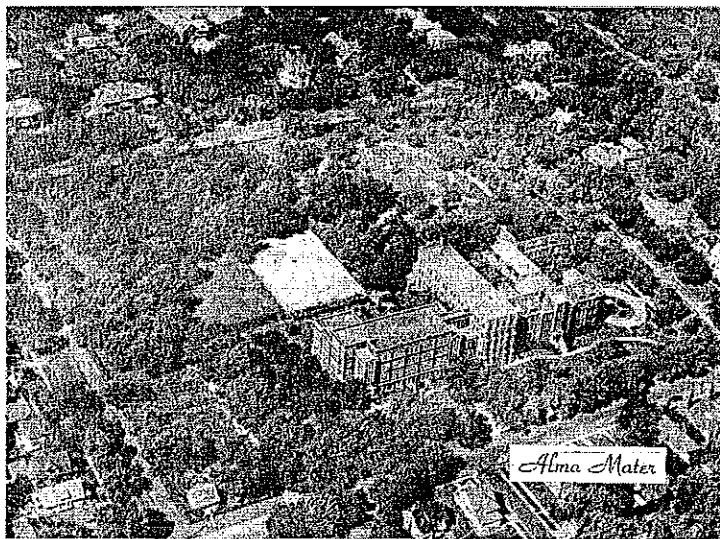
- | | |
|-----------------------|--------------------------|
| Mike & Candy Bacome | Richard Marlenee |
| Mel Beckman | Kevin Mercer |
| Shelly DeBoer | Jeff Moor |
| Harry Dirgo | Quynh Nguyen |
| Mike & Ben Caban | Kirk Peck |
| Lloyd Canfield | Tom Rose |
| Linda & Anne Chapman | Ben & Austin Sweazy |
| Chris & Sallie Foster | Jim Wilwerding |
| Roger Freeman | Leo & Marlene Wilwerding |
| Ron & Eric Frey | Mike Wilwerding |
| Ed & Tim Hendershot | Terry & Steve Wilwerding |
| Bobby Marion | Ron & Cynde Yates |



This youngster has a difficult task, "Which pumpkin do I pick?" Eighty pumpkins were given away in the annual 'pumpkin patch' for neighborhood kids during the cleanup in Gifford Park.



This aerial photo looks west at the Duchesne campus well before the recent renovation, most likely in the 1970's. You may be able to notice Cathedral near the top part of this photo.



This photo of the Duchesne campus was taken in 1953. Notice the number of trees on campus and the house in the lower left part of the photo. A tall hedge also surrounded the perimeter of the campus.

wife; and Mary Wurdeman, Mayor Daub's fiancée.

Duchesne Academy has enrolled 208 students this fall and counts a total of 46 faculty members and administrative personnel. Along with their academic studies the girls are required to do a certain amount of community service such as helping at homeless shelters and tutoring elementary school children. The students are eagerly awaiting their first opportunity to play on their new soccer field. This will be next spring when Duchesne competes again for the Nebraska State Championship, a title they held for four of the last six years. We wish them luck on their new playing field and congratulations for the beautiful new/old campus.

by Eva Swanson

Editor's Note: An article written by Judi Caban, on Henry W. Yates and the public school named in his honor appeared in the Gifford Park Pride in September 1992. The next series of "Historically Speaking" will feature famous/prominent/interesting people who lived in this area.

Historically Speaking...Duchesne

continued from page 1

continues as a Catholic, four-year, college preparatory, high school for women. It exemplifies a tradition of religious commitment and builds on the educational excellence of the women religious who first came to this "frontier post in the far west."

This marker was placed in 1981. Since then, and especially these last two years we have seen a reconstruction of the grounds. The area bordering 38th Street has been revamped into tennis courts and a soccer field. Many old trees were removed; Mathews Hall, an unused dormitory, was razed; and the land excavated to provide a flat playing field. New trees have now been planted along 38th Street and the view of the city from there is outstanding. The interior courts of the campus have also been redone. The most notable changes are the concrete arch in the center, the wrought-iron arch over the entrance steps, and the corner markers. The former science building on California Street has been home for the Nebraska Business College for a number of years, but has now been vacated and is up for lease.

I was recently given a guided tour of the Academy. Mrs. Shiela Haggas, head of the school, was my very gracious guide of the very old, yet new, building. She proudly showed me the airy classrooms, spacious auditorium; wide halls; the beautiful chapel with its stained glass windows; lecture halls; gymnasium; dining hall; student lounges; faculty rooms and more. To tell the truth, I was surprised at the modern, yet traditional appearance of the school.

Duchesne counts many outstanding alumni among whom are Letitia Baldrige, author and newspaper columnist, who was Social Secretary to Mrs. Jacqueline Kennedy; Gail Yanney, Omaha philanthropist; Diane Nelson, the Nebraska Governor's

Neighborhood Watch News

Have you ever looked out your window some night and saw a vehicle cruising by your home with the yellow GPNA sign on the side? Some of your neighbors are taking their time and gas to keep an eye on your neighborhood, and they need your help.

The GPNA has one of the first neighborhood watch patrols to be formed in Omaha. It was started shortly after the

formation of the GPNA, with the idea of observing the neighbor-

hood during weekend nights, and "showing the flag" of responsible citizens in some of our more troublesome spots. In the early days, the watch group would assemble in the Duchesne parking lot, don yellow vests and walk around the neighborhood. Rules and guidelines were written to assure that safety of the group. We would keep in contact with a fixed location dispatcher with CB walkie talkies. I recall that at times we had nearly 20 people go on these patrols. We would often stop at Kilgores, 7-11 or Bucky's for a mid patrol break. While we were certainly a notable sight, walking was too slow (and too much late night exercise) to cover very much of the large GPNA area. Cold and rain also discouraged a regular schedule. As the number of watch people declined and the program evolved, we moved into cars with the familiar signs, but still communicated by CB. A grant from the city got us VHF radios, which eliminated the natural and deliberate interference that we often had on the citizens band radios.

As time went on, the watch patrols fell into familiar rhythm, with certain people available at regular times. Typically we would have a few cars out each evening, with the dispatcher handling the traffic. Unfortunately, in the last few years many of the regulars have quit or moved away until now we usually have only 2-4 people out, in one or two cars, sometimes without a dispatcher.

In a typical watch, we can usually drive down all of the streets in the neighborhood a couple of times. We communicate with the other cars and keep a special eye on potential trouble spots. We usually monitor the police scanner for calls in our neighborhood also. In the years of the patrol, we have seen and prevented a

few serious crimes. Our main job is to observe and communicate, however, not become involved in any problems. We are not law enforcement personnel, but we can be their eyes. In fact though, our neighborhood is generally always quiet and sometimes we go for weeks without making a call.

If you have an hour or two you could spare on a

"Our main job is to observe and communicate, however, not become involved in any problems. We are not law enforcement personnel, but we can be their eyes."

weekend night, we could certainly use your help. We have smoking

and non-smoking cars, and all sorts of interesting people. If you are a late night TV watcher, you could be a dispatcher without disrupting your favorite pastime. If you are interested, you could be a part of one of the positive things about our neighborhood. Call **Terry Wilwerding (342-2795)** or **Ron Yates (558-6027)** if you are interested, or simply come to the GPNA office at 11:00 pm on Friday or Saturday nights if you would like to ride along. We would like to meet you, and I'm sure we'll have a good time.

by Terry Wilwerding

California Tacos & More

Homemade Mexican Food

342-0212

33rd & California Street

Dine In or Carry Out

Sun - Thur: 11 a.m. - 10 p.m.

Fri - Sat: 11 a.m. - 2 a.m.



The Truth About Door-to-Door Peddlers

Do you live in a neighborhood that is frequented by uninvited people coming to your door, selling all kinds of things you never really wanted? Have you ever wondered if they were legitimate? If you answered "yes" to either of these questions, this article should be of interest to you.

First of all, what is a "peddler?" According to Omaha Code Sec. 19-89, "A peddler is any person traveling by foot, automobile, motor truck, vehicle or other type of conveyance, from house-to-house, residence-to-residence, or dwelling-to-dwelling, carrying, conveying or transporting goods, wares, candies, magazines, or other products or merchandise or provisions of whatsoever nature, offering and exposing the same for sale, or making sales and delivering such

article to purchasers, or offering to furnish or perform services. The term 'peddler' shall also include any person traveling either by foot, automobile, motor truck, vehicle, or other type of conveyance, from house-to-house, residence-to-residence, or dwelling-to-dwelling, taking or attempting to take orders for sale of goods, wares, candies, magazines, books, or other products or merchandise of whatsoever nature for future delivery, or for services to be furnished or performed in the future, whether or not such person has, carries, or exposes for sale a sample of the subject of such sale, or whether or not he/she is collecting advance payment on such sales."

For any person to engage in business as a peddler within the corporate limits of the city, he or she must first have obtained a permit. The peddler

must be able to provide a copy of the permit at the request of any police officer, or at the request of the occupant of any house, residence or dwelling which such peddler has approached in search of a prospective customer. Also, it shall be unlawful to make in-person calls as a peddler to prospective customers before 8:00 am or after 6:00 pm on any day of the week, unless requested to do so by the prospective customer.

The next time a peddler tries to sell you something, remember to ask to see their permit and make note of the time of day that they are selling. Knowing the laws can help keep unwanted peddlers from coming to your location.

Reprinted from the O.P.D. Community Resource Center Newsletter.

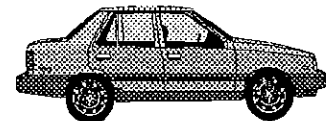


J'N'J GROCERY STORE

*Fresh Meats -- Fresh Produce
Friendly Service*

3301 California Street -- 422-1058

WE DELIVER!



7:00 AM - 10:00 PM Monday thru Thursday

7:00 AM - 11:00 PM Friday thru Saturday

8:00 AM - 10:00 PM Sunday

PKA Fraternity Spooks Neighborhood With Haunted House

As they approached the corner of 31st and Chicago, they could hear the bone chilling screams of the children inside. As they approached the door, they were welcomed by the eerie presence of the grim reaper. They were guided down the dark stairs and given the history of the hauntings of the old throughout the three-story house from every corner and every



The brothers of Pi Kappa Alpha hosted their 2nd annual of the Gifford Park community. Those parents and children who survived the chills and thrills of the haunted house were treated to refreshments and goodies in the adjacent carriage house. An estimated 150 to 200 kids walked through the dark hallways of the Pike House and all left with some sort of fright. The brothers put a lot of time and effort into getting this house decorated. It seemed as though we had as much fun as the kids. We would like to thank all the parents who brought their children to the house. Also a special thanks to the GPNA for their help with advertising the event and providing some treats. And to the kids, we can't wait to see you again next year.


by Kevin Campbell, PKA Fraternity

Editor's note: Again this year the PKA Fraternity did a great job of making this event a huge success. Special thanks to Kevin Campbell, Dave Case and Dave Barbuto of PKA for organizing the event. The following people also contributed their efforts: Loren Johnson (J'N'J Grocery), Jerry Pitt (Colombo Candy), Kenny Martens (Little Debbie), Betty Slayden (Yates PTA), and Marlene Wilwerding and Jean Peck (cookies). We look forward to next year!


TKE Fraternity Cleans Up Business District

On Sunday, October 27, members of the Tau Kappa Epsilon (TKE) Fraternity, chartered at the University of Nebraska at Omaha, completed a cleanup of the 33rd & California Street business district and Gifford Park. The guys picked up broken glass, pulled weeds and swept sidewalks in front of the businesses. The vacant lot next to J'N'J Grocery was picked up along with the basketball court. Thanks to Josh Monaco (Chapter President), Justin Melkus, Ben Salisbury, Chris Ruggeiro, Rich McWilliams, Jake Wilson, Gary Collins, Larry Meader, Robert Beckman, Scott Franks and Chris Cook. We appreciate the effort of the Gifford Park Neighborhood Association and look forward to helping out in the future.

by Justin Melkus, TKE Fraternity



GIFFORD PARK NEIGHBORHOOD ASSOCIATION
532 N. 33rd Street, Omaha, NE 68131
MEMBERSHIP APPLICATION
(Please print clearly)



Membership year: _____ *(Membership year runs from June 1 through May 31)*

Type of membership: Single (\$5) _____ Family (\$8) _____ Business (\$25) _____

Name of business _____

Name _____ (Last) _____ (First)

Spouse _____ (Last) _____ (First)

Address _____ (Street) _____ (City) _____ (State) _____ (Zip)

Telephone Number: _____ (Home) _____ (Work)

In case of an emergency notify: _____ (Name) _____ (Address) _____ (Phone No.)

May this information be included in the GPNA Neighborhood Directory? Yes _____ No _____

Signature _____ Date _____

**We Need
Your
Support,
Please Join
The GPNA
Today!**